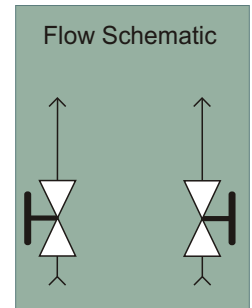


PRECISION Instrument Manifolds

2 Valve Level Manifold and Selection Chart

The PRECISION Level manifold is designed to be used with differential pressure type manifolds for measuring level in pressurized vessels. Like all of our manifolds, the LT can be mounted with our PA/CMBH universal pipemount, securely mounting the manifold and allowing the transmitter to be removed without disturbing impulse lines. The schematics are shown at left.

There are no bleed ports or extemporaneous openings in the body, to help ensure that process media is not accidentally released to atmosphere. The P3/LT bolts directly to the transmitter, and is available with 1/2" FNPT process inlets, or direct mount for use with futballs.

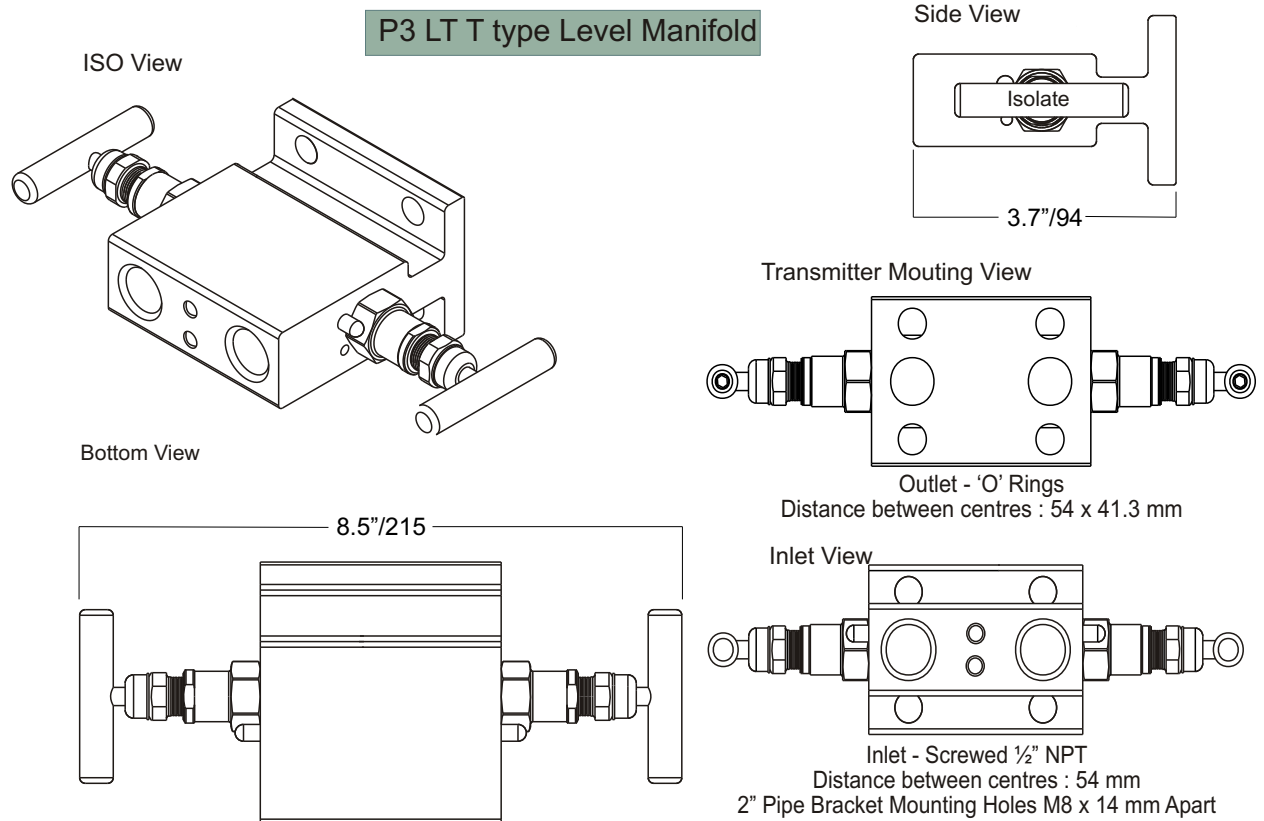


P3/LT Selection Chart

P3/LT Basic Manifold

- T - Tbar style, 1/2" FNPT inlet, direct mount to transmitter or HK - direct mount inlet/outlet
- T - Teflon seals/packing or G for Graphite
- H - 316SS
- X - All T bar handles
- X - Direct mount to transmitter (54mm)

EXAMPLE: P3/LTTHXX-F



The New Standard in Instrument Valves & Manifolds!



Contact Information



Dynamic Controls & Sensors, Inc.

Postal Address

P.O.Box 5009

Kingwood, TX 77325

Physical Address

1515 Lakeville Dr., Building B

Kingwood, TX 77339

voice: 281-812-9844 Fax: 281-812-9845

www.precisionvalves.net

sales@precisionvalves.net